

LOCKSOLAR™

Rack-in-a-Box™

SECURE · UNIVERSAL · MOUNTING



www.locksolar.com

Rack-in-a-Box™

Rack-in-a-Box™ has been designed specifically to withstand harsh weather conditions and is constructed in our ISO 9001:2000 certified factory. Its durability is matched with a standard 12 year warranty and is compliant with the latest structural design requirements of most international standards.

Rack-in-a-Box™ has a number of unique features, setting it apart from its competitors and allowing it to cater for every type of installation no matter how complex. These unique features not only make this the most secure solar mounting system but also make it the most adaptable.

“Rack-in-a-Box’s™ unique features not only make it the most secure solar mounting system but also make it the most universal.”

The **Lock Solar Security Head Screw** is Australian engineered and each Rack-in-a-Box™ system is delivered with a Lock Solar Key to fit this vital piece of the system, providing security and piece of mind.

With **Adjustable Mid Clamps** as well as **Adjustable End Clamps**, Rack-in-a-box™ suits all frames sizes so you’ll never again have the problem of needing multiple size clamps for different installations.

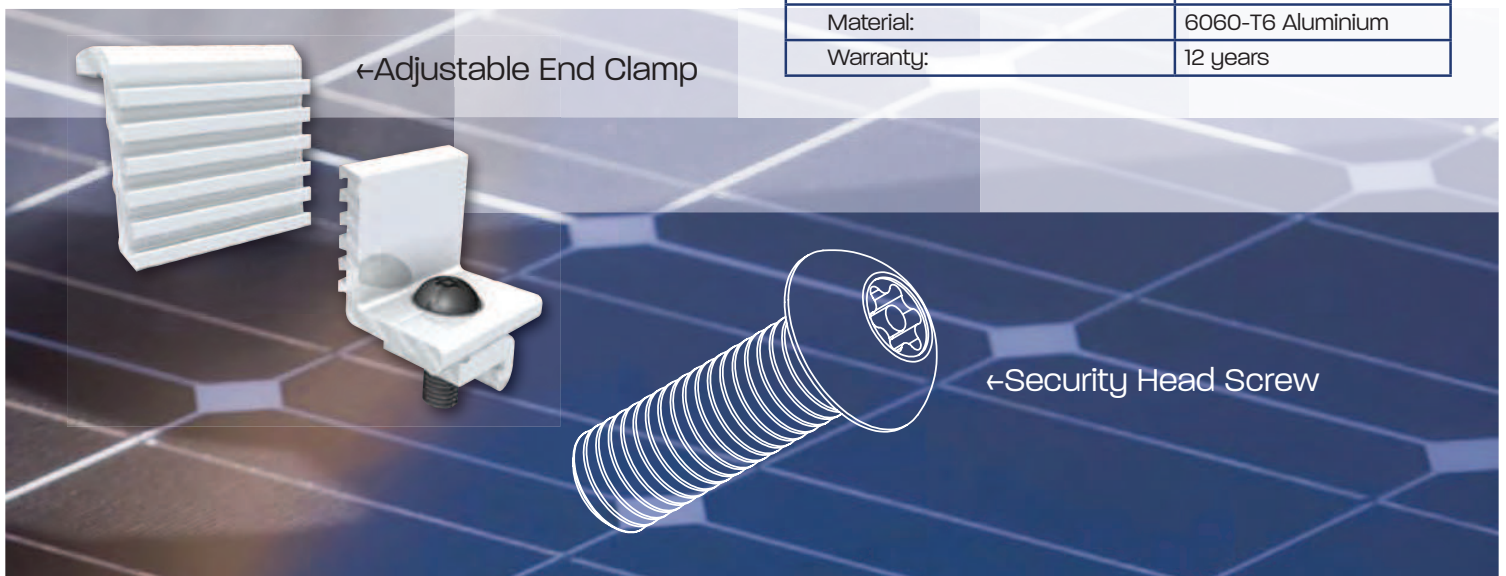
The **Integrated Cable Management Rail** allows all cabling to be neatly placed out of eye view and our patented **Twist Lock Cable Tie** assists you to keep all cable tied together and attached securely to the rail.

Rack-in-a-Box™ offers all of these groundbreaking features as well as encompassing all components necessary for any installation and conveniently **Packaged Into Only 1 Box**.

The Lock Solar, Rack-in-a-Box™ system offers a complete, easy to install, adaptable modular system which will suit all Solar PV installations. So choose Rack-in-a-Box™ for superior quality, reliability, security and piece of mind.



| SPECIFICATIONS | |
|------------------------------|-----------------------|
| Mounting Site Compatibility: | Pitched or flat roof |
| Roofing Compatibility: | All claddings |
| Roof Slope: | Up to 60° |
| Module Orientation: | Landscape or portrait |
| Standards: | Various |
| Material: | 6060-T6 Aluminium |
| Warranty: | 12 years |





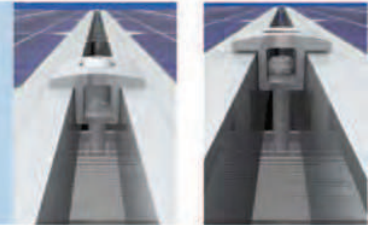
Lock Solar Security Head Screw

The Lock Solar Security Head Screw has been included to provide an unequalled level of security to any Rack-in-a-Box™ installation. Due to the great value of all solar investments Lock Solar realised the need for this extra level of security.



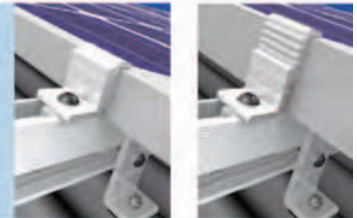
Adjustable Mid Clamp

Our uniquely designed fully adjustable mid clamp can accommodate PV panel thicknesses ranging from 31 to 55mm by the simple addition or removal of its concealed spacer.



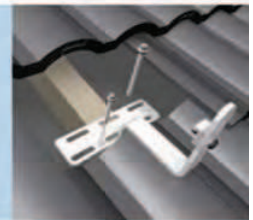
Adjustable End Clamp

The adjustable end clamp has been designed to easily accommodate all PV panel thicknesses (31-55mm) with just the one clamp and locks the array in place with the Lock Solar Security Head Screw.



Tile Bracket

Designed for tile roof applications, the tile hook mounts directly to roof rafters and is concealed between tiles to ensure water proofing is unaffected.



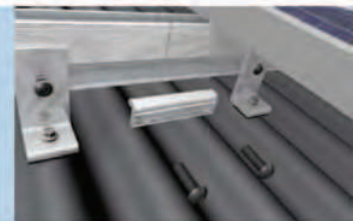
L Tin Bracket

The L bracket mounts directly to tin roofs and its adaptable height adjustment allows a level PV array to be established, no matter how uneven the roof.



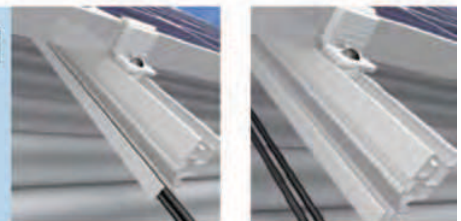
Rail Joiner

Multiple rail installations are aligned and firmly locked together, extending the length of an array, using the Rack-in-a-Box™ Rail Joiner.



Integrated Cable Management Rail

The high strength, low weight rail is extruded in corrosion resistant 6060-T6 Aluminium and includes an integrated cable management solution.



Twist Lock Cable Tie

Additional cable lengths can be bundled and securely clipped to the rail using the Rack-in-a-Box™ Twist Lock Cable Ties for efficient cable management, protection and safety.



In addition to standard installations Rack-in-a-Box™ can be used in rural areas, on hill side and hill top sites and in cyclonic regions, by including additional roof brackets in the installation.



“Mounting solutions that offer flexibility and durability along with quick, easy, low cost installations.”

Lock Solar is an Australian owned and operated company which designs, manufactures and distributes Solar Mounting Systems for the global Solar PV market. Our mounting solutions are designed to meet the needs of any type of Solar installation including Residential, Corporate and Utility scale customers.

Lock Solar's product development involves a collaboration of installers, designers and system engineers who work with a variety of PV modules...this collaboration assists in communicating the need for mounting solutions that offer flexibility and durability along with quick, easy, low cost installations.

Lock Solar mounting systems meet the highest requirements with regard to technology, quality and reliability. Our systems are made of premium grade aluminium which guarantees durability and allows for complete recycling.

At Lock Solar we place importance on prompt delivery, simple handling and fast installations - our mounting systems are a by product of this philosophy.

Distributor



LOCKSOLAR™

www.locksolar.com

e. enquiries@locksolar.com

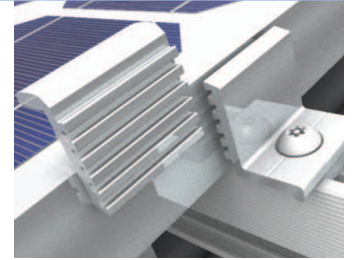
t. +61 1300 199 233 f. +61 1300 779 882

PO BOX 8160 GCMC, 9726 QLD Australia



LOCKSOLAR™

SECURE · UNIVERSAL · MOUNTING



LOCK SOLAR PRODUCT AND WORKMANSHIP WARRANTY

Lock Solar Ltd. (hereinafter referred to as “Lock Solar” or “We”) sell solar photovoltaic mounting products (hereinafter referred to as “goods” or “product”). For these goods, Lock Solar submits the following warranty statement to the end user (hereinafter referred to as “customer”), in compliance with the provisions included in these Terms of Warranty (hereinafter referred to as “warranty”).

Terms of Warranty

We grant a 12 year durability warranty on all components of photovoltaic mounting systems supplied by us.

If damage occurs despite correct installation and use under normal strain, we will replace the affected component within the warranty period without delay.

This warranty shall transfer from the original buyer to subsequent buyers and/or end users for the remainder of the warranty term provided the solar system is not moved or relocated from where it was originally installed.

Implementation of the Warranty

If the goods are damaged, the customer shall immediately, or no later than 2 weeks after the damage has been detected, report the details of damage in writing to Lock Solar or our contractual partner. If the customer fails to report the damage in due time, the claims against Lock Solar under this warranty will be excluded.

In addition to the report of damage, the customer must also supply additional information, in writing, to Lock Solar or our contractual partner, which are important for Lock Solar to determine the cause of this damage. The additional information should include: type and location of the installation of goods, any modifications made by the customer, and any other repairs or alterations done to the goods. If the customer fails to submit this additional information in due time, the claims against Lock Solar under this warranty will be excluded.

On Lock Solar’s request, the customer shall send the goods at the customers expense to a specified address as advised by Lock Solar. We shall reimburse any costs to the customer when the damage is determined to be a warranty case. Lock Solar shall bear the costs of delivery of goods repaired or replaced under terms of the warranty back to the customer.

The goods returned by the customer shall become Lock Solar’s property, if they are not sent back to the customer repaired.





LOCKSOLAR™

SECURE · UNIVERSAL · MOUNTING



Exclusion of Warranty

These warranties are granted by Lock Solar to the customer only. The warranties only cover materials manufactured or assembled by Lock Solar and installed by a qualified installer. All warranties assume normal and reasonable use of Lock Solar products or components. These warranties do not cover damage caused by occurrences beyond the control of Lock Solar, such as:

- i) Conditions arising directly or indirectly from installation in a mobile or marine environment, war, riots, destruction, fire, explosion, earthquake, storm, typhoon, cyclone, hurricanes, tornado, volcanic action, tidal wave, freezing, acid rain, power failures, lightning, indirect lightning strike, flood, land subsidence, crack or landslide, accident, or abnormal environment or pollution, actions of third parties and other events that occur outside of Lock Solar's control and not occurring under normal operating conditions, or any phenomena that cannot be prevented with the technology available for practical use at time of this warranty.
- ii) Conditions resulting from a defect in components which are not part of Lock Solar's photovoltaic mounting systems.
- iii) Conditions arising from misuse, negligence, abuse or any human's intention or fault.
- iv) If the damage has occurred due to incorrect installation or handling of the system or due to extraordinary strain (for example damage caused by storm, impact by instability of the subsoil, especially chemical or biological impact).
- v) Damages resulting from the failure to provide reasonable maintenance including failure to clean the product, maintain sealing as reasonably necessary, or clear off gutters or roofs as and when necessary.

Installation, removal, painting, repair, adjustment, tampering, or re-installation of any Lock Solar products by other than a qualified installer voids any and all warranties, and Lock Solar expressly disclaims any liability for any costs, defects, or damages with respect to such actions.

